

DATA SHEET CRASH BUFFER WITH ANTI CLIMBER TO METRO, MULTIPLE UNITS AND HIGH SPEED TRAINS

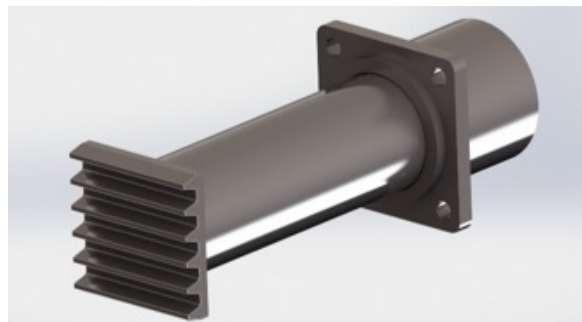


GENERAL VIEW OF SIDEBUFFER

The buffer is of type deformation tube designed to absorb energy at high impact speeds. The front end is equipped with an anti-climber plate to counteract vertical movements.

FORCE CHARACTERISTIC

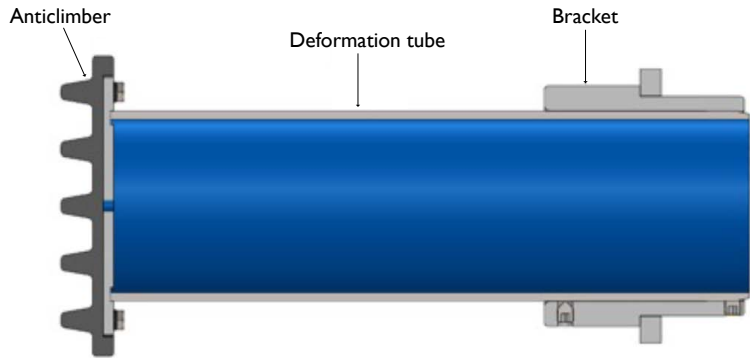
The reaction force is achieved by plastic deformation when the tube diameter is sized down to a smaller diameter. The grade of deformation is calibrated to achieve the desired reaction force.



DATA SHEET CRASH BUFFER WITH ANTI CLIMBER

SIMPLIFIED CUT VIEW OF CRASHBUFFER

During impact, the deformation tube deforms (shrinks) into the bracket, further into the car body. Normally a buffer can withstand vertical forces of 100 kN.

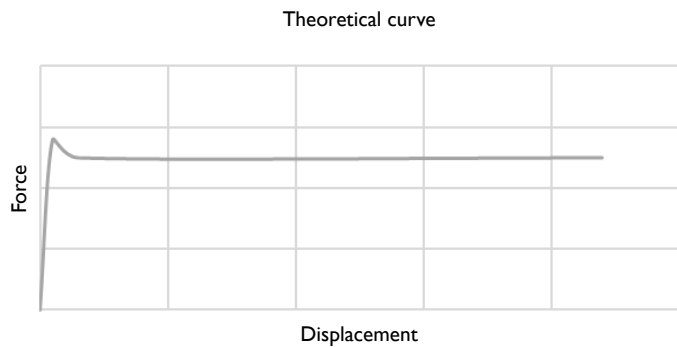


GENERAL SPECIFICATION

Version 20XX-01
 Force 200 – 2 000 kN
 Stroke 50 – 1 100 mm
 Vertical load 100 kN
 Operating down to -40° C

Design parameters outside general specification can be offered upon request.

FORCE VS STROKE DIAGRAMS (EXAMPLE)



LRV FRONT BUMPER

